

VISION-II SERIES DC18 SPECIFICATION

ITEM	UNIT	DC18		
Locking Force	kN	180		
Die Opening Stroke	mm	150		
Ejector force	kN	Mechanical Ejector		
Ejector stroke	mm	40-50		
Die height(min-max)	mm	100-300		
Platen size(HXV)	mm	360X350		
Space between Tie Bars	mm	226X226		
Shot position	mm	0, -30		
Injection force	kN	27		
Injection stroke	mm	80		
Nozzle Traverse Stroke	mm	140		
Plunger Diameter	mm	30	36	40
Shot weight(Zn)	kg	0.28	0.4	0.5
Casting Pressure	MPa	38.1	26.4	21.4
Casting Area	cm ²	41.9	60.6	74.7
Hydraulic working pressure	MPa	7		
Pump Driving Motor	kW	5.5		
Furnace Capacity (Zn)	cm ³ (kg)	22(145)		
Furnace consumption	Electricity	kW	20	
	Diesel	kg/h	3.2	
Nozzle Heating Power	kW	1.5		
Oil Tank Capacity	L	160		
Machine Weight	kg	1700		
Machine dimension	mm(LXWXH)	2970 X1380 X1890		

• We reserve the right to make any technical improvement without further notice.

Optional



L.K. MACHINERY INTERNATIONAL LTD.

Member of L.K. Group

Unit A,8/F., Mai Wah Industrial Building,
1-7 Wah Sing Street, Kwai Chung,N.T., Hong Kong.
Tel: (852)3412 5500 Fax: (852)3412 5511
Website:www.lktechnology.com
E-mail:sales@lkmachinery.com.hk

Sales Agent:

Cat.no.E15-04-01

LK HOT CHAMBER DIE CASTING MACHINE

DC18



VISION-II
series

**Technology and precision engineering
to shape the future**



VISION-II DC18

HOT CHAMBER DIE-CASTING MACHINE

The VISION-II series is designed for providing efficient and cost-effective production experience to customers by producing castings requiring high quality and large production volume such as zipper, button, snap hook, etc.

★ **User-Friendly**

Intuitive operation panel with 4.3" text display provides direct control to the entire machine.

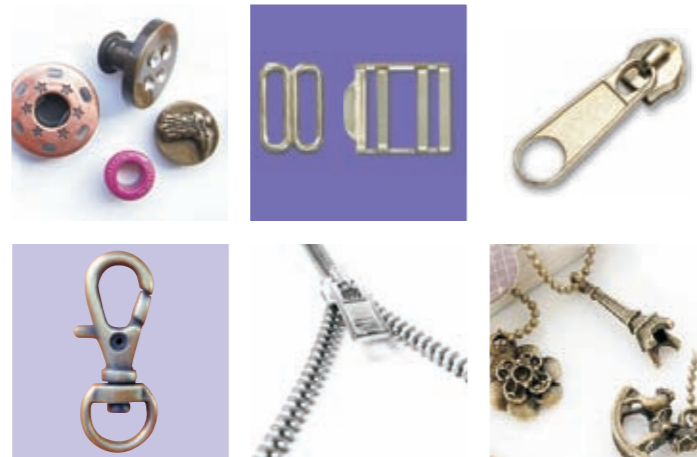
★ **Reliable**

Gooseneck is integrated with furnace for better temperature consistency. Nozzle is electric-heated separately with temperature controller to provide precision control and avoid nozzle clogging.

★ **Efficient**

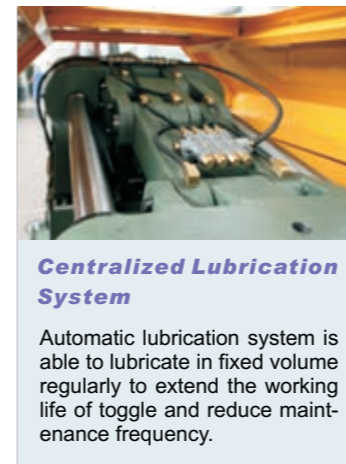
High die closing/opening and injection speed shortens cycle time and enhances production efficiency.

Castings



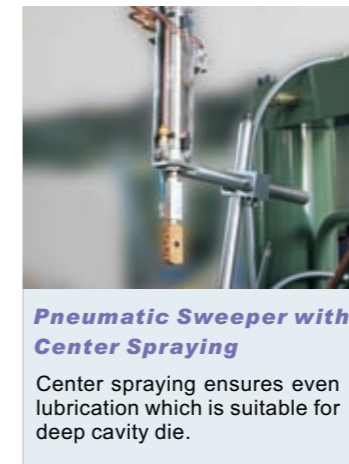
Advanced Control System

Simple text display enables users to perform settings in a straightforward way.



Centralized Lubrication System

Automatic lubrication system is able to lubricate in fixed volume regularly to extend the working life of toggle and reduce maintenance frequency.



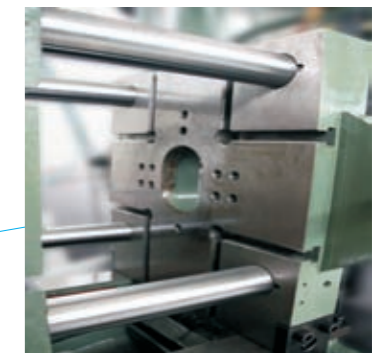
Pneumatic Sweeper with Center Spraying

Center spraying ensures even lubrication which is suitable for deep cavity die.



Injection System

Direct mounted piston type accumulator provides faster response time to guarantee higher injection speed.



Dual Shot Position

Provides flexibility in die mold design and production

Select your favour :



Furnace

Machine can be equipped with optional electrical furnace, natural gas furnace or diesel furnace for better heating efficiency.

*Furnace Guard is separated option.

